

Dr.DE[®] Drilling Engineering Toolbox

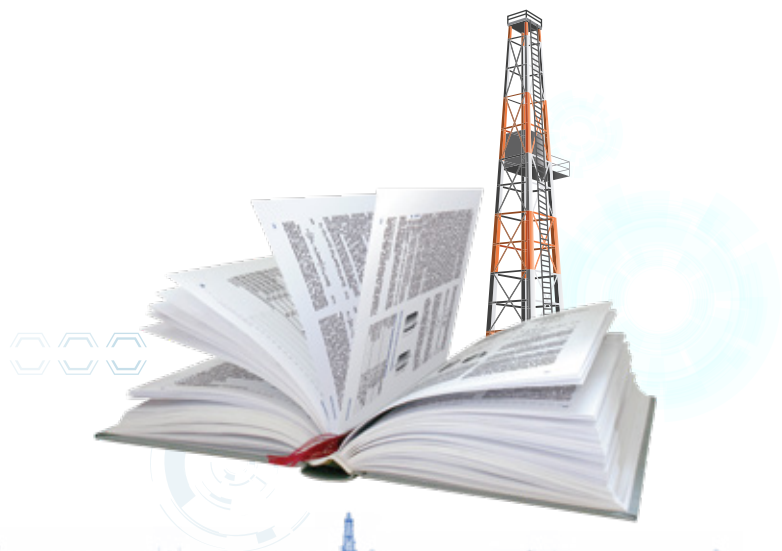
Overview

This past century has been the most pivotal in drilling technology advancements with the most influential drilling professionals collaborating with literature, books, and computer programs. But in the meantime, the amount of information we are receiving can many times be overwhelming.

Much of the technological advances and engineering applications from the past four decades have been encompassed into Dr. DE. Dr. DE is a comprehensive collection of drilling engineering calculations, all in one straightforward and user-friendly software.

Flipping through handbooks and spreadsheets to find solutions is no longer an issue. With Dr. DE, the user has access to over 190 functions ranging from drilling engineering fundamentals to advanced well path designs and 3D wellbore visualizations.

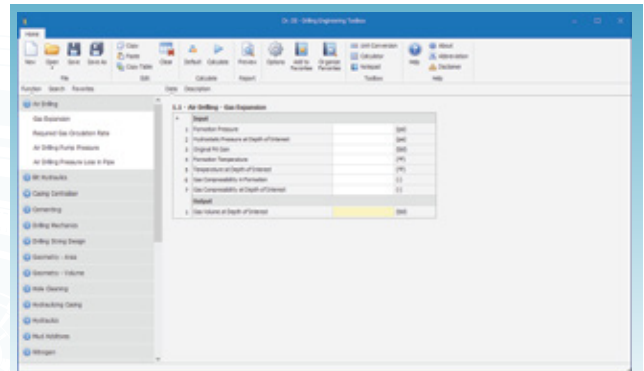
Dr. DE is available as a standalone software, a web-based software, and a mobile application.



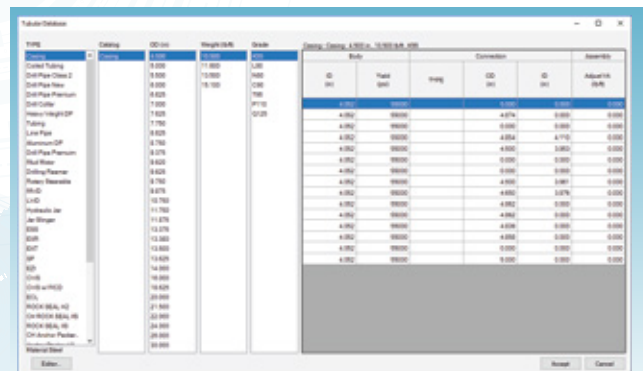


Standalone/Web-based Features

- Over 190 functions in 26 groups (Standalone only. Web-based Dr. DE has over 180 functions)
- Extensive and expandable tubular, centralizer and fluid database
- 3D well path visualization
- Intelligent 2D well path design
- Detailed illustrations
- Search function and favorite list
- Professional reports
- Export report to 10 different formats
- US oil field, SI, and customized units
- Company account with multiple users (Web-based only)



Over 190 Functions in 26 Groups



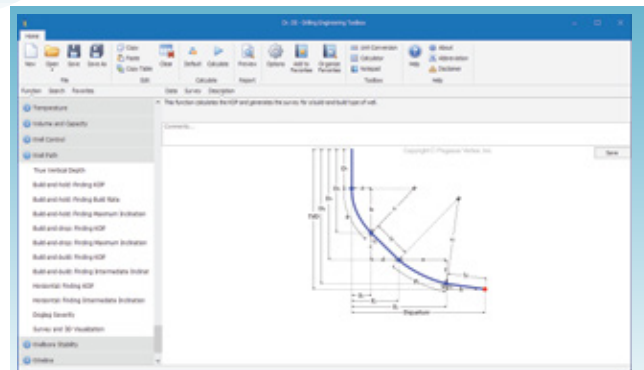
Database

Mobile Application Features

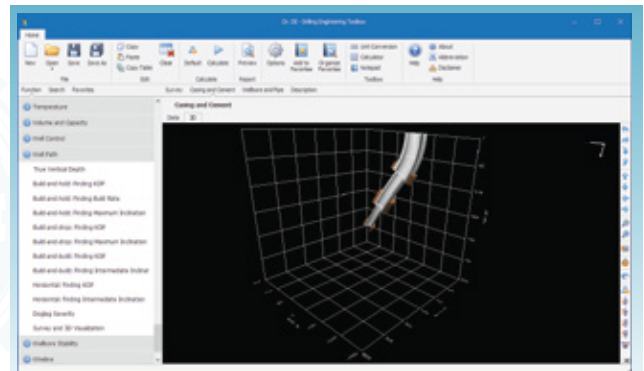
- 29 functions in 11 groups

System Requirements

- Microsoft Windows® 10 or above
- Microsoft Office® 2016 or above
- Dual-core Intel or AMD processor, 1.4 GHz or higher. Quad-core CPU recommended. Not compatible with ARM processor
- 4 GB RAM
- 200 MB of free disk space for installation
- 1,280 x 768 display resolution



Graph



3D Animation